

Pear Perfection Tablecloth

Finished Size: 52" x 52"



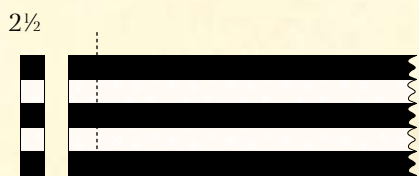
Fabric Requirements 🍐

- Fabric A Center Panel -**
(1 1/8 yards)
One 36 1/2" square
- Fabric B Accent Trim -**
(1/4 yard)
Two 1 1/4" x 36 1/2" strips
Two 1 1/4" x 38" strips
- Fabric C Outside Border -**
(2/3 yard)
Six 3 1/2" x 42" strips
- Fabric D Dark Patchwork Tile**
(1 1/8 yards)
Fifteen 2 1/2" x 42" strips
- Fabric E Light Patchwork Tile**
(3/4 yard)
Ten 2 1/2" x 42" strips

Making the Tablecloth

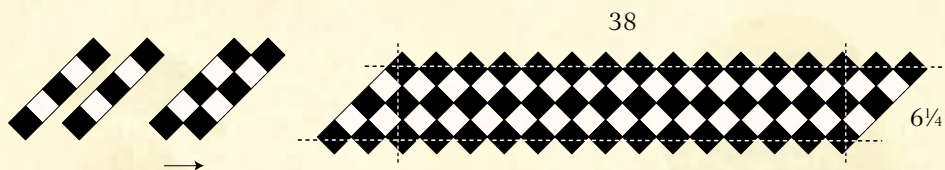
1. Sew 36 1/2" Fabric A square between two 1 1/4" x 36 1/2" Fabric B strips. Press. Sew this unit between two 1 1/4" x 38" Fabric B strips. Press.

2. Sew three alternating 2 1/2" x 42" Fabric D strips and two 2 1/2" x 42" Fabric E strips together as shown. Press toward Fabric D. Make five. Cut seventy-two 2 1/2"-wide segments.



Make 5
Cut 72 segments

3. Sew sixteen 2 1/2"-wide segments from step 2 together as shown. Press. Make two. Cut into 38" x 6 1/4" rectangle. Edges will extend 1/4" past the tile points allowing for seam allowances. Sew to opposite sides of unit from step 1.



4. Sew twenty 2 1/2"-wide segments from step 2 together. Press. Make two. Cut into two 49 1/2" x 6 1/4" rectangles. Sew to remaining sides. Press.

5. Sew 3 1/2" x 42" Fabric C strips end to end to make one continuous 3 1/2"-wide strip. Press. Measure quilt through center from side to side. Trim two 3 1/2"-wide strips to that measurement. Sew to opposite sides of quilt. Press.

6. Measure quilt through center from top to bottom, including borders just added. Trim two 3 1/2"-wide Fabric C strips to this measurement. Sew to sides. Press.

7. Press under 1/4" along outside edge. Fold Outside Border in half lengthwise, wrong sides together. Press and pin in place. Hand stitch to finish.

